

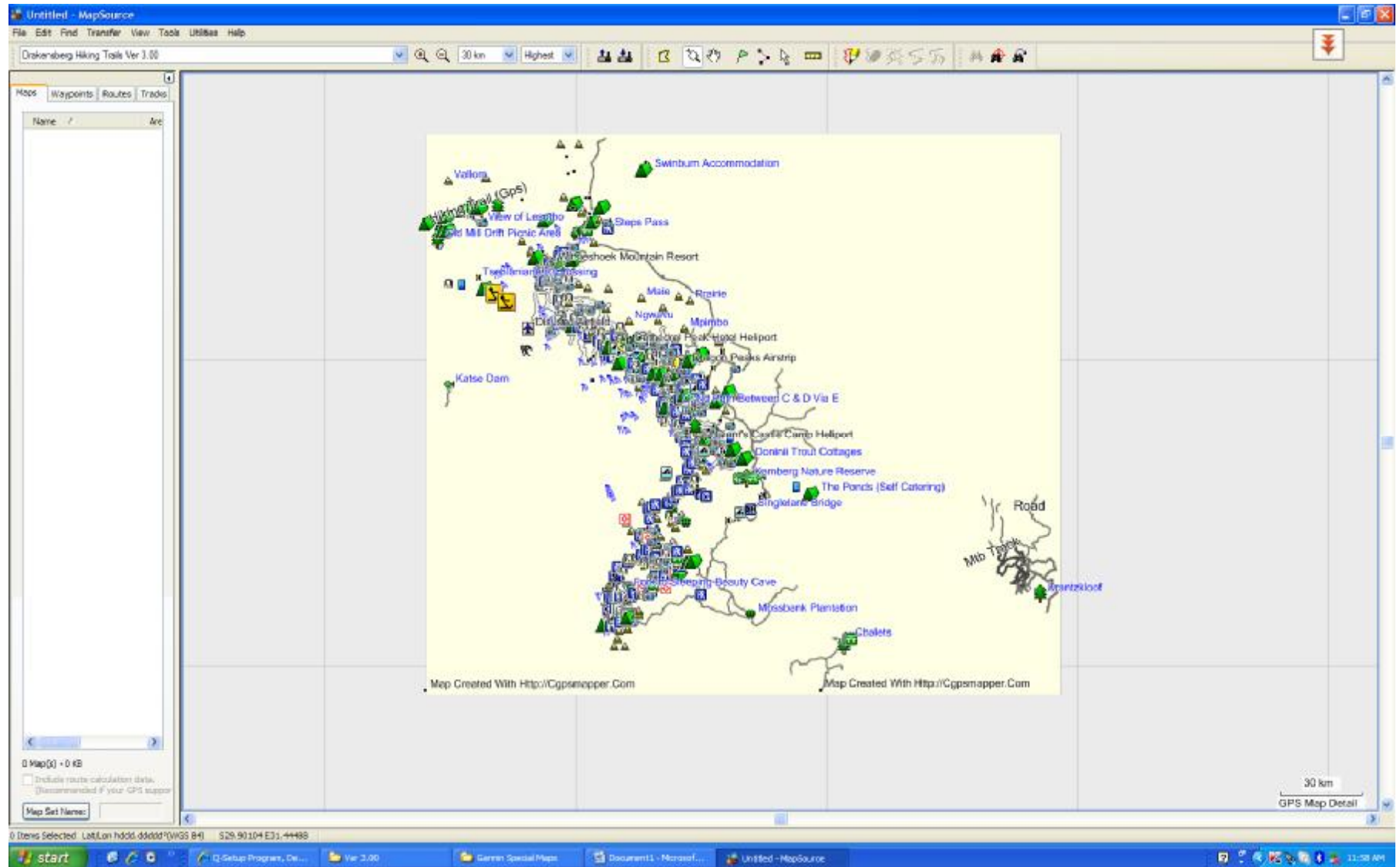
How to install the Drakensberg Hiking map in Mapsource on your Ms Windows based PC (tested on XP, Vista and 7) and upload to your GPSr



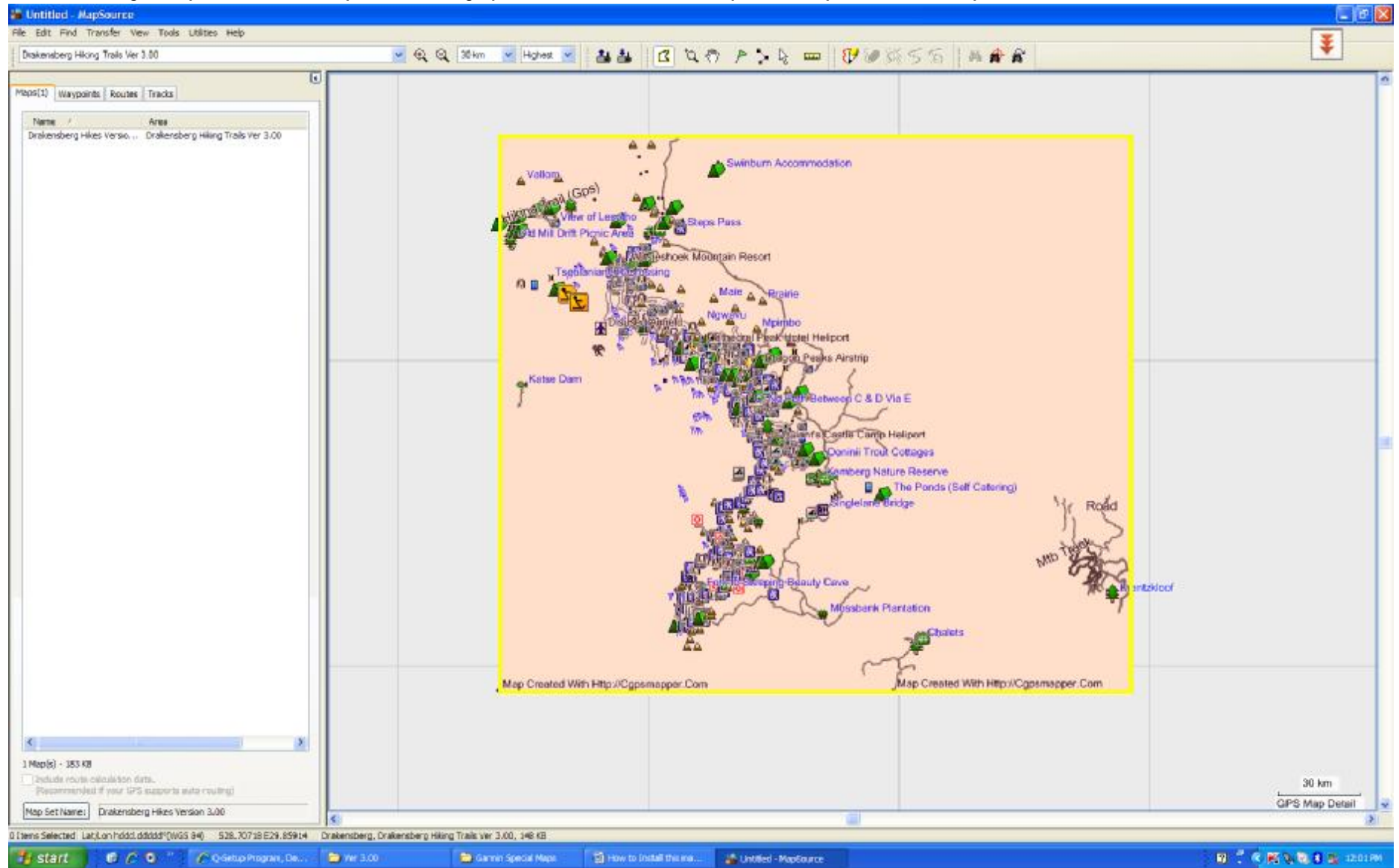
1. Unrar the compressed file Drakensberg V3.00.rar and extract the Drakensberg V3.00.ex_ file and rename it back to Drakensberg V3.00.exe
2. I only do this to get the executable file Drakensberg V3.00.exe passed the virus protection programs installed on most PCs nowadays.
3. Now run Drakensberg V3.00.exe by double clicking on it and follow the installation instructions. Please read carefully through the Licence and Installation notes and always first uninstall any previous versions of this map if you have one already installed on your PC.



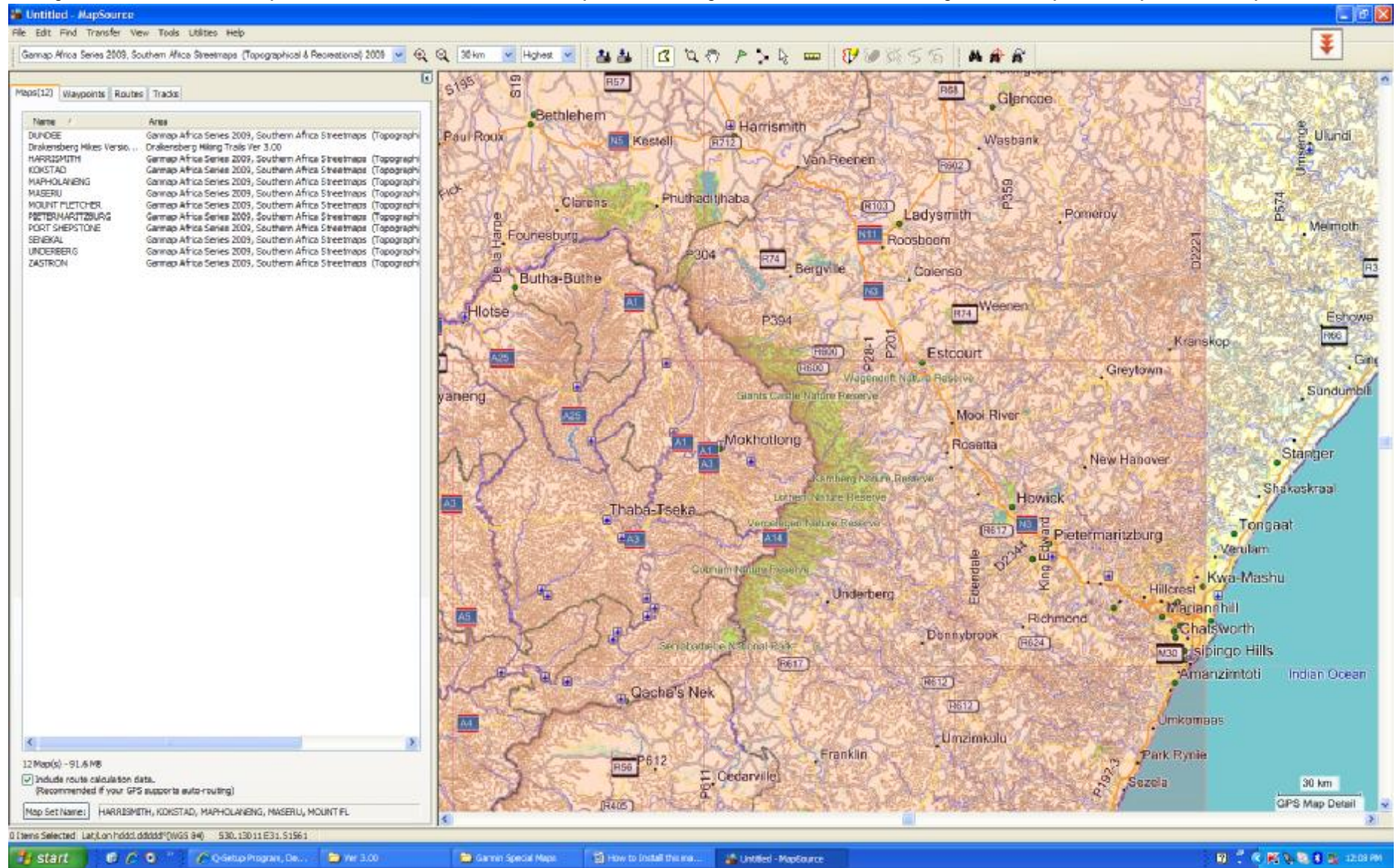
- Now run Mapsource and select the Drakensberg Hiking Trails Map now added to your set of installed maps in Mapsource.



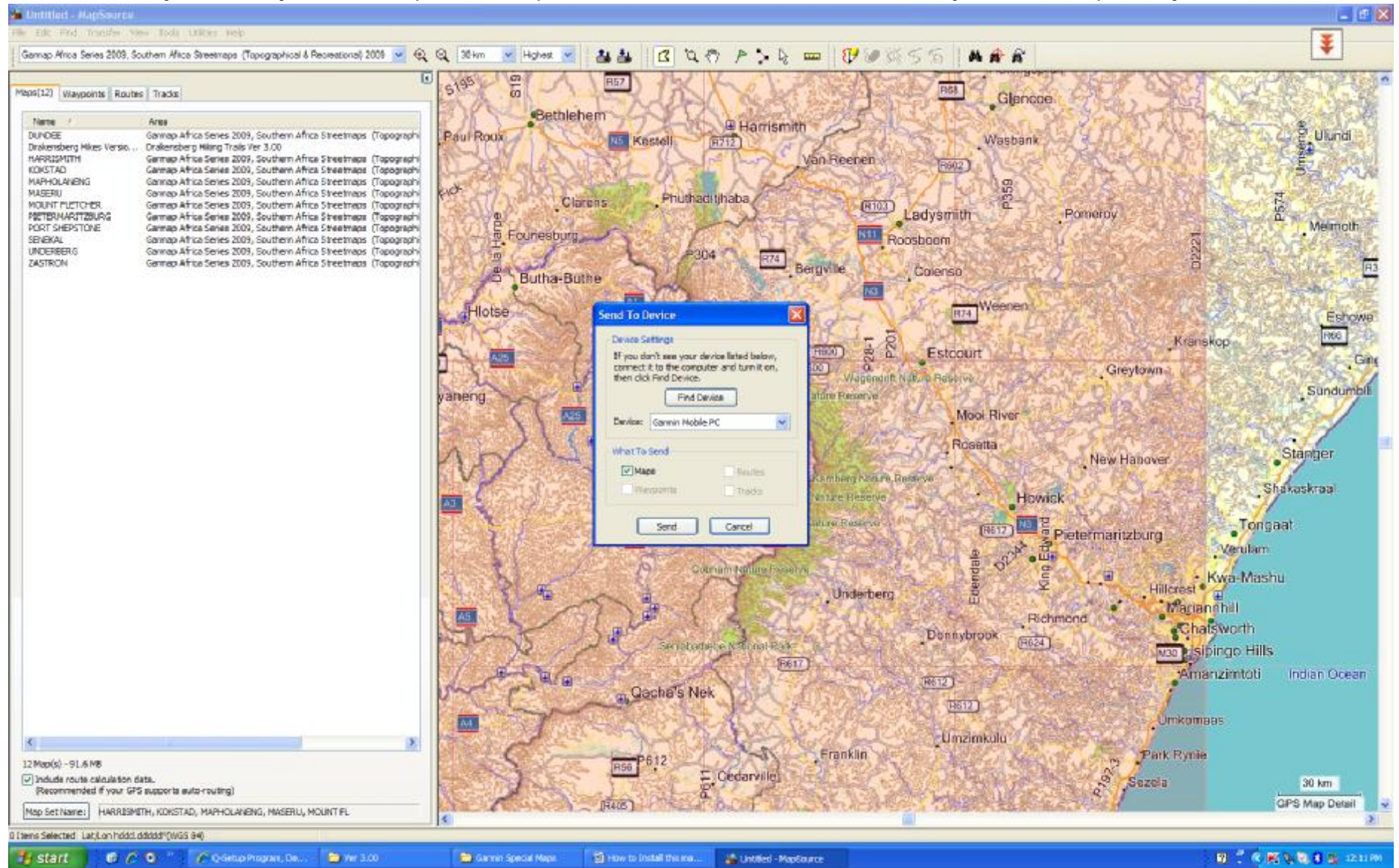
5. Select this single map tile with the Map Tool, it will go pink if selected and the map list will update to one map selected



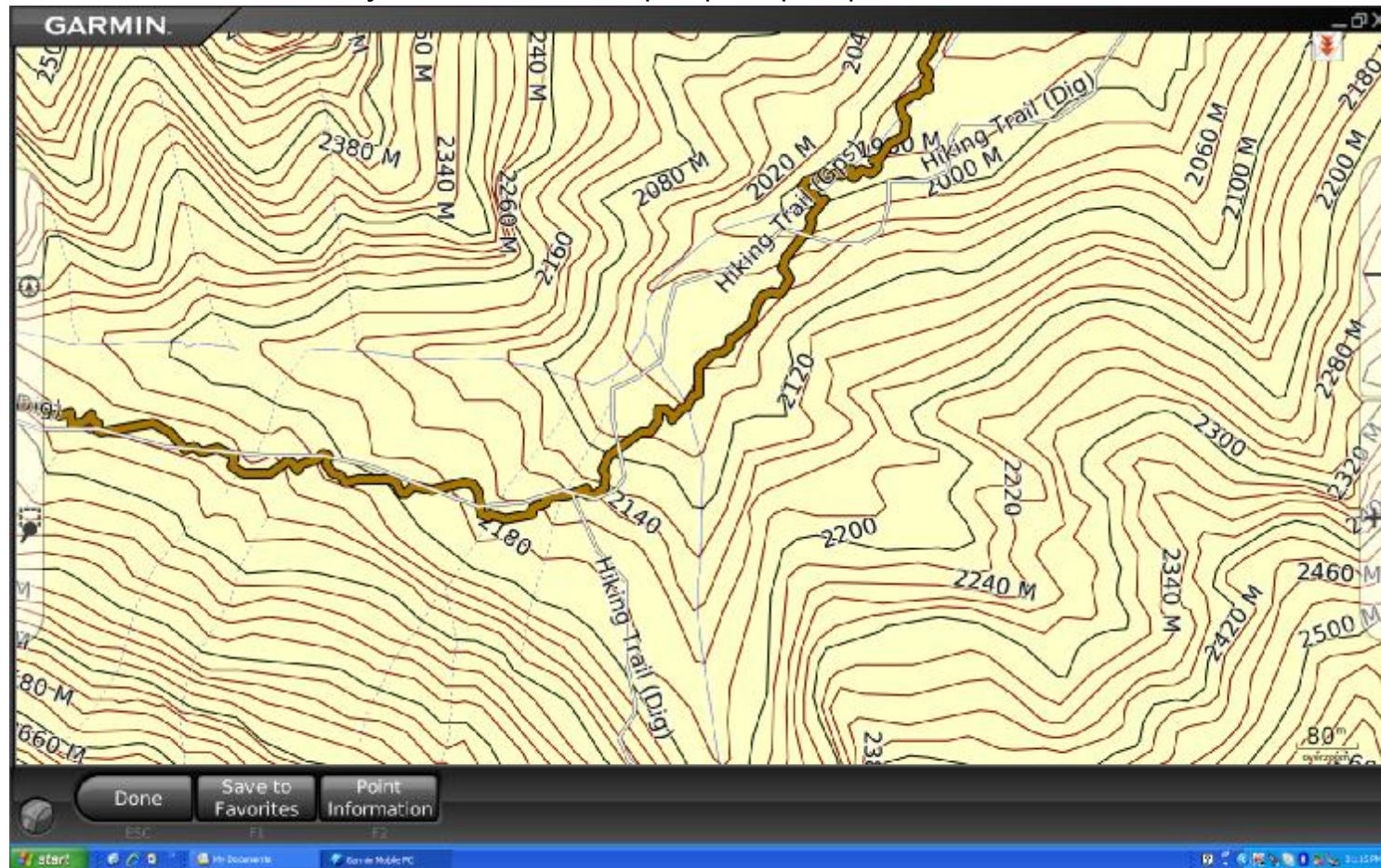
6. Change to a suitable Base Map of this area and select further map tiles covering the same area (I like using the Garmap 2009 Topo & Rec Map).



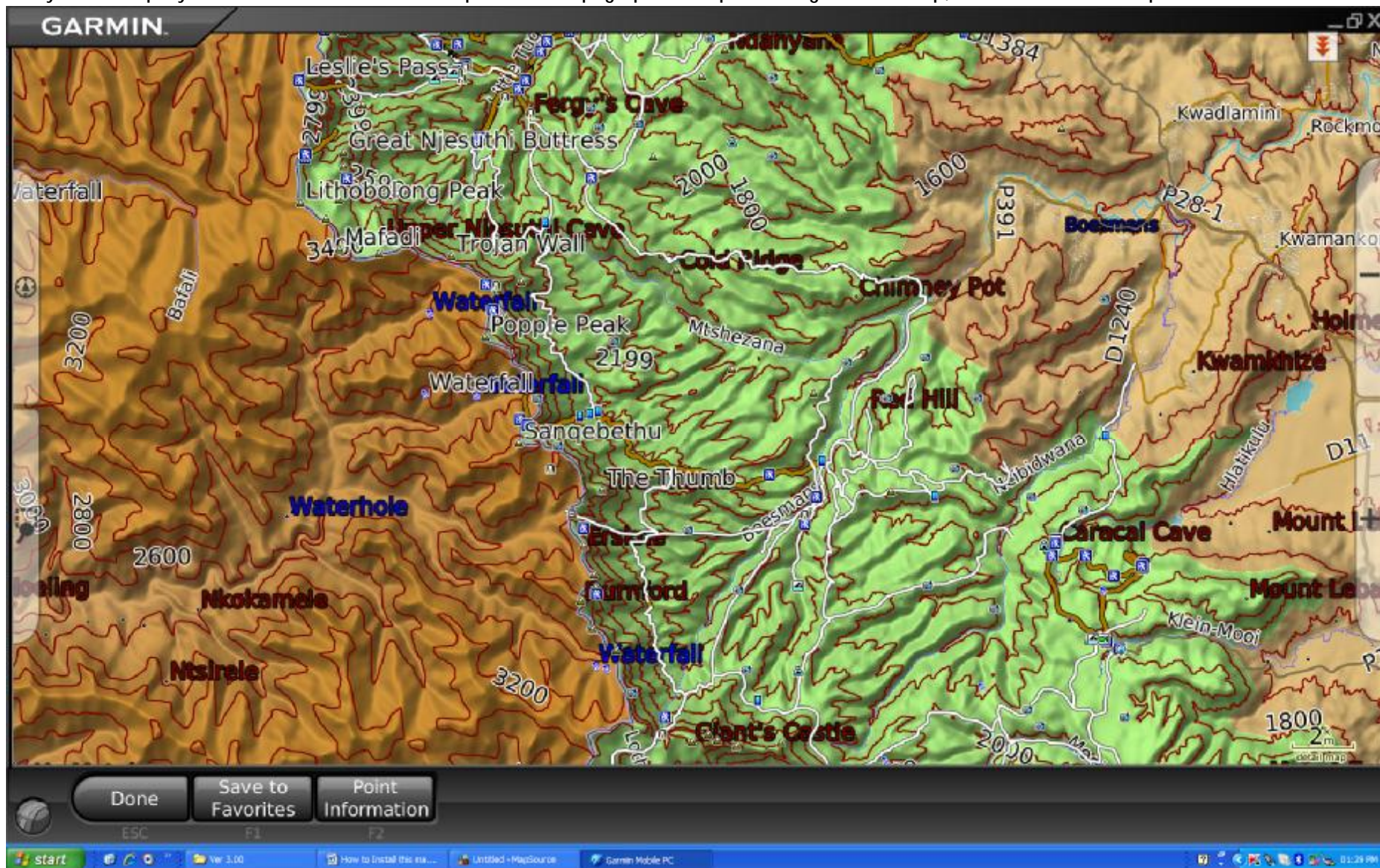
7. You are now ready to connect your GPS and upload this Map selection to it. Remember this will overwrite your current map set on your GPSr.



8. You are free to switch the Hiking Map layer off at any time in your GPSr if you are not using it, remember this is a independent Transparent Map Layer, it will also not affect your auto-routing function on your base map if this is a auto-routable map like the Garmap Africa 2009 series maps. This map layer only adds hiking trail information (not auto-routable) to your basemap in installed on your GPSr.
9. You will notice two types of hiking route data on the map layer, labeled as HIKING TRAIL (GPS) meaning that trail is accurate GPS captured data and not so accurate HIKING TRAIL (DIG) data, this data was captured off paper maps and will be replaced with more accurate GPS captured data when it becomes available, this is where your assistance could help to speed up this process.



10. And yes this map layer also works on 3D GPSr but I prefer the Topographical map for hiking as a basemap, the so-called DEM maps are not accurate



11. You are more than welcome to contact me if you require further assistance, my contact details are in the installation notes.

Thanks - Johan Cloete