



Fishers Pan Game Farm (Pty) LTD - P.O. Box 469 - Tsumeb - Namibia  
Tel.: +264 (0)67 229100 - Fax: +264 (0)67 229101 - Email: mail@etosha-aoba-lodge.com

## LOCATION

Etosha Aoba Lodge is situated on a 36.000 ha private game reserve at the Etosha National Park. If you follow the signs you will reach the lodge after 13km.



## ACCOMMODATION

- Ten luxury thatched bungalows
- Each cottage is stylishly furnished with large twin beds, private en-suite bathroom as well as a verandah from which you can absorb the natural surroundings.
- Each cottage is equipped with a ceiling fan, coffee/tea machine, mosquito net and 220 V electricity supply in the middle of the bush to ensure luxurious comfort during your stay.



## FACILITIES

- Thatched Lapa with terrace over-looking a water hole
- Swimming pool
- Bar, Restaurant (for resident guests only)
- Impressive wine selection
- Curio Shop
- Small library
- Internet access



## IMPRESSIONS



Evening mood at Aoba



Sundowner at Fishers Pan



Swimming pool in the bush



Fishers Pan Game Farm (Pty) LTD - P.O. Box 469 - Tsumeb - Namibia  
Tel.: +264 (0)67 229100 - Fax: +264 (0)67 229101 - Email: mail@etosha-aoba-lodge.com

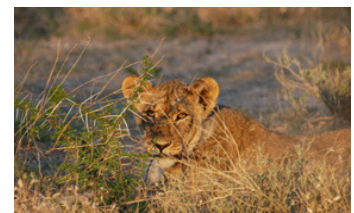
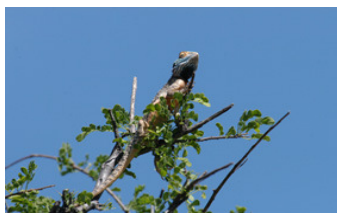
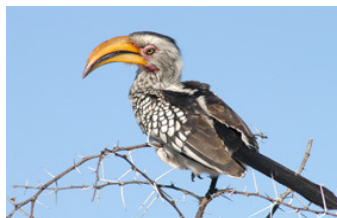
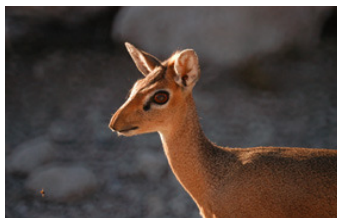
---

## ACTIVITIES

- Relax at our swimming pool and watch the animals at our water hole
- Game viewing from hides at several water holes within walking distance
- Botanical Trail: see and read more about 50 different trees & plants
- Bird watching – more than 350 recorded species of African birdlife are in our area
- Sundowner Drive – enjoy a wonderful sunset at the edge of Fishers Pan
- Etosha Drive – drive by your self or with our well trained guides in an open vehicle in one of the most beautiful parks in southern Africa – Etosha
- Raised hide – Take fantastic photos from our hides and on the photo drives with Georg



## OUR WILDLIFE HABITAT



...and much more!

## OUR RATES (valid till 31.10.2009)

Bungalow with Breakfast (twin or double):	N\$ 695,00 per person sharing
Bungalow with Breakfast & Dinner (twin or double):	N\$ 835,00 per person sharing
Bungalow with Breakfast (single):	N\$ 895,00
Bungalow with Breakfast & Dinner (single):	N\$ 1035,00
Sundowner Drive:	N\$ 150,00 per person
Etosha Game Drive AM or PM:	N\$ 420,00 per person